

BUSINESS P R O F I L E

◀ TEX WORLD KNITWEAR LTD.



OUR FACTORY

3D VIEW





“

THE GREATEST
THREAT TO OUR
PLANET IS THE
BELIEF THAT
SOMEONE ELSE
WILL SAVE IT

”

BETTER FOR WORKERS

The fashion industry makes billions in profits every year, yet the 60-million strong workforce that powers it (over 90% of whom are women) are living in poverty.

Sustainable fashion gives these workers rights, including a decent living wage, safer working conditions, and less risk of being harassed.

BETTER FOR ENVIRONMENT

Sustainable fashion creates longer-lasting clothes of a higher quality, meaning that while they are more expensive initially, they will stay in your wardrobe for years.

BETTER FOR FUTURE

Many big-name brands are leading the way in sustainability, but until the majority of consumers begin to put their money where their mouth is, profits will always rule the decision makers. Sustainable fashion is a conscious choice to be made by individuals, not by companies.

WHY GO FOR SUSTAINABLE BUSINESS PARTNERS?



SWAPAN KUMAR DAS

Managing Director

His incredible eye for detail and unparalleled after-sales service in the capital machinery industry has earned him the reputation of being one of the most respected and knowledgeable persons in the industry. Swapan Kumar Das has served as General Secretary for two years and is current president of Dhaka University Mass Communication and Journalism Department Alumni Association, Vice President DU Jagannath Hall Alumni Association & General Secretary of SARGAM. In his twenty years, Tex World Associates Ltd. has accumulated numerous credits and credentials for supporting and accompanying hundreds of establishments such as Beximco Group, GMS Group, New Age Group, Ratul Knitwear, Microfibre Group, Radial Group, JK Fabrics, Mondol Group, etc.

ENTREPRENEUR PROFILES

Swapan Kumar Das has been active in the textile fraternity since 1985, starting his career as a financial analyst in the industrial credit division of a Government funded bank. His academic credentials include Masters's in Mass Communication and Journalism from Dhaka University. Furthermore, he has amassed his business acumen from the Institute of Business Administration where he completed his MBA in 1982. With the gained knowledge from his MBA and 8 Years of banking experience as an industrial credit analyst, Mr. Das decided to delve into the RMG industry with Dolphine Fashions Ltd., an export-oriented readymade garments manufacturing facility in Narayanganj. As his experience in the field increased, the decision to leave the bank job became necessary and in 1994, he decided to try his entrepreneurial skills by setting up another garment factory, Knitex Dyeing and Printing Ltd. – this time with all the other vertically integrated facilities.

In 1996, Mr. Das formed another company, an indenting firm, Century Associates Ltd., a sourcing hub for European, Japanese, and Taiwanese capital machinery and accessories. As their other endeavors were with partners and associates, he finally decided to enforce his business acumen for himself and started Tex World Associates Ltd., a techno-economic indenting and consultancy firm in 2001. The company is in its 21st year and has worked with more than 500 factories, spanning Dhaka, Chittagong, Kolkata, and other cities home and abroad.



SHAUMA ARNAB DAS

Director

ENTREPRENEUR PROFILES

Shauma Arnab Das is the older son of Mr. Swapan Kumar Das and the acting CEO and Director Overseas Affairs of Tex World Knitwear Ltd. Upon completion of post-graduation in Management from CASS Business School (Bayer Business School) UK, Arnab Das joined the business in the year 2016. His credentials also include an International Business - Bachelor of Science Degree from Brunel University London. He also is a certified Management Consultant and has worked in a top tier Consultancy firm in London.

He also teaches Human Resource and Management (MBA) as an adjunct lecturer in one of the leading private universities in Dhaka. With 8 years of work experience, Mr. Arnab now leads the path for Tex World Knitwear Ltd. dealing with multiple aspects starting from sourcing to procurement to internal management.

BASIC INFORMATION

Head Office

Road 32, House 493, New DOHS Mohakhali, Dhaka – 1206

Factory Address

Sutipara, Dhamrai, Dhaka

Contact Person

Swapan Kumar Das
Managing Director

Cell: +880 1711521530

Email: swapan.das@texworldknit.com

Website : www.texworldknit.com

Space Capacity

Total Land: 100 decimal Open Space: 40%

Floor Space: 36000 sft (total 2 floors)

Safety System: Automatic fire detection and Closed-Circuit Security system

Utility and power

- 1200 sft utility building
- 2 Generators
- Own sub-station
- 150 kg boiler
- Air compressor
- Waste recycling: Waste recycling storage: 4 rooms



BASIC INFORMATION

Current Manpower

330+ (Women 50%: Men 50%)

Knitting

13 Circular Knitting Machines; 20 Flat Knitting Machines

Dyeing

Dyeing is done from reputed Oeko-tex & GOTS certified dyeing mills.

Printing

Printing is done in one of our subsidiary facility in a separate premise.

Embroidery

Embroidery unit with plain stitch, sequins, cord, terry etc.

Laboratory

Basic wash tests, GSM test, composition test etc.

Needle Detection

Conducted by HASHIMA Brand Needle Detector

Fusing Machine

Conducted by HASHIMA Brand Fusing Machine

Cutting

Done with the help of large cutting tables with fabric spreader & straight and round knives



BASIC INFORMATION

Sewing

95% of the sewing machinery are JUKI branded high-end models.

Finishing

We have full furnished finishing section along with spot removing section, thread sucker etc.

Packing

Separate packing section along with needle detector, security controlled rooms.

Transportation

Own transportation for all sorts of procurement purpose

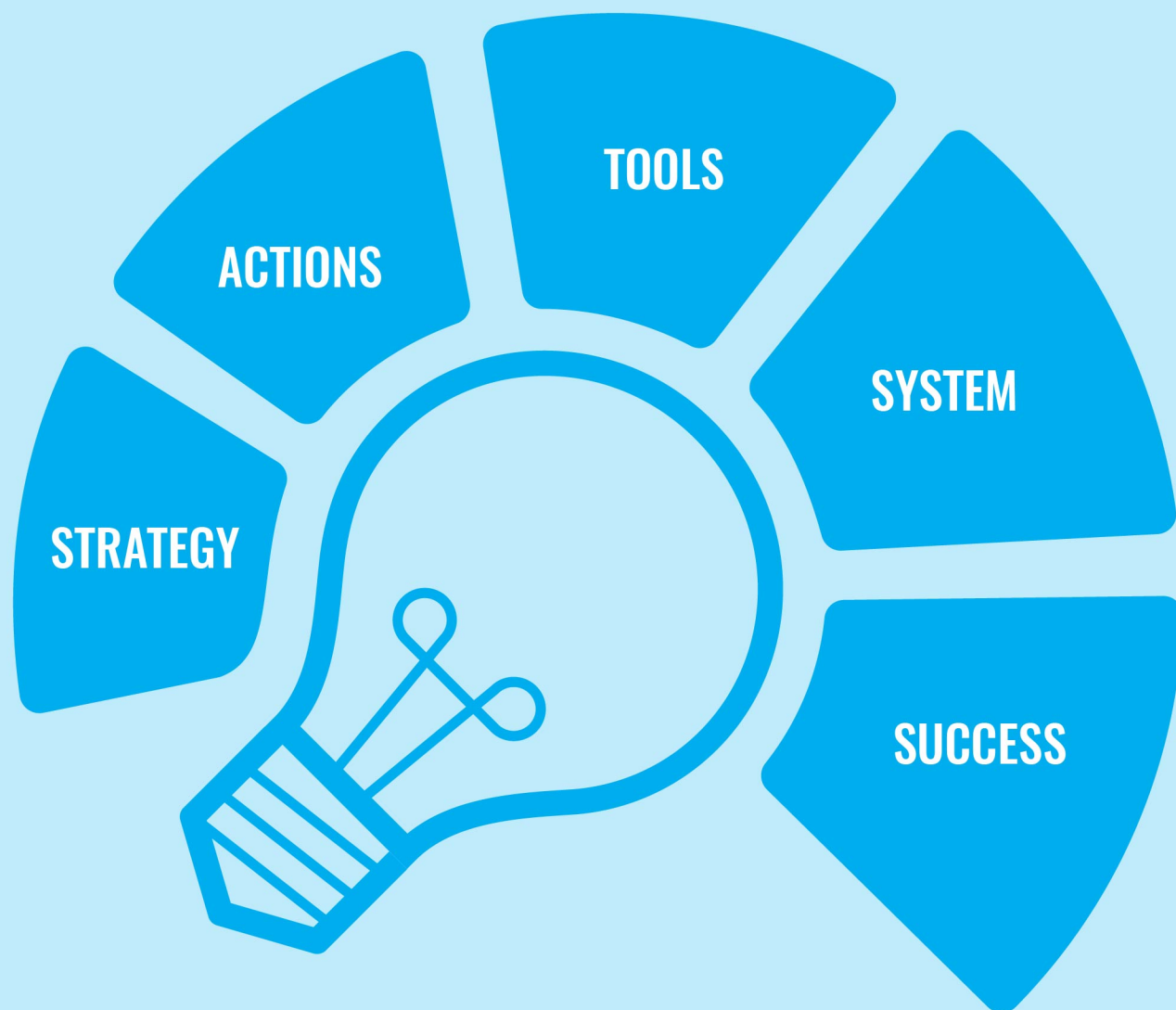
Day Care

Full time Carers for Children. Facilities with child nutrition and indoor recreation center

Medical Care

- Full time Doctor and Nurse
- Collaboration with Gonoshasthay Kendra
- Facilities with First Aid Kit and Emergency Vehicle





BUSINESS MODEL

SUSTAINABILITY MATTERS

Mission, Vision & Philosophy



ROADMAP

2022

INVESTMENT ON
AUTOMATED
&
OPTIMIZED
PRODUCTION

2025

ACHIEVE LEED
CERTIFICATION
BASED ON
SUSTAINABLE
INFRASTRUCTURE
& SOCIAL
COMPLIANCE

2028

INDUSTRY 4.0

2030

FULLY SUSTAINABLE
MANUFACTURING AND
ASSOCIATIONS WITH
LIKE-MINDED BRANDS

THE EFFICIENT WAY



WATER EFFICIENCY

WATER RESERVOIR WITH 65000 GALLONS CAPACITY



ENERGY EFFICIENCY

- Energy saving LED lights
- Energy saving servo motors
- Solar panel producing more than 20% of total energy



WASTE CONTROL

- Selling the waste to recycler
- No landfill

MANUFACTURING EXPERTISE

Lorem ipsum dolor sit amet, consectetur adipiscing elit, sed diam nonummy nibh euismod tincidunt ut laoreet dolore magna aliquam erat volutpat. Ut wisi enim ad minim veniam, quis nostrud exerci tation ullamcorper suscipit lobortis nisl ut aliquip ex ea commodo consequat. Duis autem vel eum iriure dolor in hendrerit in vulputate velit esse molestie consequat, vel illum dolore eu feugiat nulla facilisis at vero eros et accumsan et iusto odio dignissim qui blandit praesent luptatum zzril delenit augue dui dolore te feugait nulla facilisi.

MANUFACTURING EXPERTISE

Lorem ipsum dolor sit amet, consectetur adipiscing elit, sed diam nonummy nibh euismod tincidunt ut laoreet dolore magna aliquam erat volutpat. Ut wisi enim ad minim veniam, quis nostrud exerci tation ullamcorper suscipit lobortis nisl ut aliquip ex ea commodo consequat. Duis autem vel eum iriure dolor in hendrerit in vulputate velit esse molestie consequat, vel illum dolore eu feugiat nulla facilisis at vero eros et accumsan et iusto odio dignissim qui blandit praesent luptatum zzril delenit augue duis dolore te feugait nulla facilisi.



JERSEY



TERRY



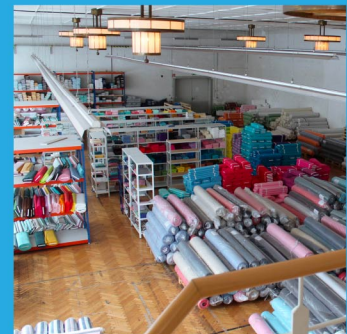
SYNTHETIC



PIQUE



RIB



VALUE-ADDED
FABRIC

FABRIC EXPERTISE

FAQ

MOQ

due to our lean & efficient manufacturing structure,
we are capable to do short quantities of selective
designs of knit garments

PAYMENT TERMS

LETTER OF CREDIT (L/C)

PORTS

CHITTAGONG PORT (Sea Shipment)

DHAKA Airport (Air Shipment)

LEAD TIME

SAMPLE Proto/First sample: 4 to 7 working days

Sales sample : 6 to 10 weeks



FAQ

PP SAMPLE

5 to 10 working days

BULK ORDER

Minimum 30 days ~ Maximum 120 days
[Maximum depends on order size and number of styles]

CAPACITY

15 lines of sewing | 18000 pcs per day

FABRIC PRODUCTION

KNITTING CAPACITY

- 4000 kg of fabric per day
- 11000 sets of collar/cuff per day

THANKS YOU

Email us with any questions or inquiries or call. We would be happy to answer your questions and set up a meeting with you. **Tex World Knitwear Ltd.** can help you apart from the flock!

 +880 1711521530

 swapan.das@texworldknit.com

 **Head Office**
Road 32, House 493, New DOHS Mohakhali, Dhaka-1206

 **Factory Address**
Sutipara, Dhamrai, Dhaka

